

Directions to Mtentu Lodge via Babeni

From the tar road to Mtentu Lodge is a $\pm 1\text{h}30 - 2$ hour dirt road drive - enjoy it! You can do it the Wild Coast way - ask any of the locals for directions to the lodge, they will help you out, or follow the directions below.



From Wild Coast Sun / Port Edward, go $\pm 18\text{km}$ on the tar road until you get to the Umkolora sign (green board).

Zero your odometer at the start of the dirt road at the Umkolora turn off from the R61.
(DO NOT RESET THE ODOMETER AT EACH TURN)

At 2.8km go Left

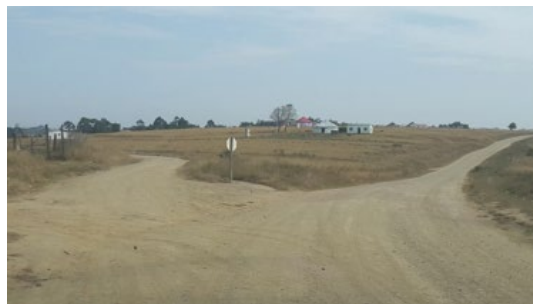


At 8.0km go Right



There is a clinic with green Jo-Jo Tanks on the left hand side

At 12.3km go Right



Mngungu J.S.S School on the left

Directions to Mtenta Lodge via Babeni

At 18.6km go Left



At 19.4km go Right



*There is an orange homestead on the left
Soccer field on the right*

At 20.7km go Right



*There is a gumtree pole fence on the left
There is a white homestead on the right*

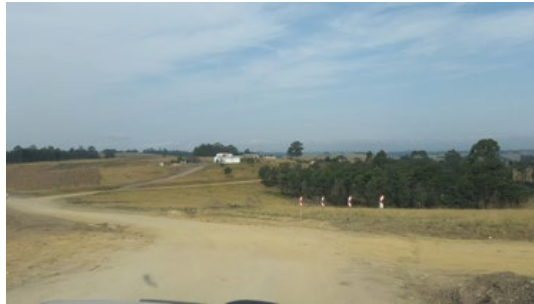
At 21.9km go Left



*There is a drainage ditch just before the split
There is a telephone pole on the hill on the right*

Directions to Mtenta Lodge via Baleni

At 22.7km go Left



*There are chevron boards at the split
There is a white homestead with green jo-jo tanks on the hill ahead*

At 27.4km go Left



*There is a homestead with a red roof on the left
There is a yellow homestead on the right*

At 28.0km go Left



Stay left of the Baleni Clinic Sign

At 34.6km go Right



*There is a blue homestead on the left and a road construction site
with a container on your right.
ONLY 12KM TO GO!!!!!!!!!!!!*

Directions to Mtenta Lodge via Babeni

At 35.1km go Right



There is a school with the green roof on the left

At 42.8km go Left



There is a small gumtree plantation on the left

At 44.8km go Right



*Turn opposite the pink Spaza shop and just behind the white building
ONTO A DIRT TRACK ROAD. FOLLOW THE TIRE TRACKS.*

At 45.5km go Left



There is toilet on the left

Directions to Mtentu Lodge via Babeni

At 46.0km go Right

Go around the BOTTOM of the hill



46.7km WELCOME TO MTENTU LODGE...

You have arrived and survived.. head to the bar for a welcome drink.

Enjoy your stay with us.